

**2 IN 1 SONIC FACIAL CLEANSER  
WITH EYE MASSAGER**

**INSTRUCTION MANUAL**

**Safety Instructions:**

To ensure proper operation of this appliance, please read this instruction manual carefully before you using the appliance and save it for further reference.

**⚠ WARNING**

- Do not use this appliance under the following conditions:
  - Children
  - Persons with implanted medical device
  - Persons with sensitive skin
  - Persons with skin conditions
  - Areas where epilation or plastic surgery was performed
  - Areas such as eyelids or throat
- Immediately stop using the appliance and consult a specialist if you feel unwell.
- Do not place the appliance in a hot or humid environment.
- Do not attempt to modify, disassemble, or repair the appliance by yourself.

**⚠ CAUTION**

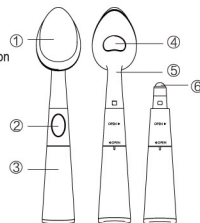
- If the appliance is not used for a long time remove the battery to prevent a possible leakage.

**Specifications:**

- Name: 2 in 1 Sonic Facial Cleanser with eye massager
- Item NO.: AP-004
- Rated Voltage/Power: 1.5V / 0.11W
- Type of Battery: 1 X AAA Battery 1.5V (not Included)
- Size: 174 X 51 X 35.5mm
- Material: ABS

**Product Description (as shown in picture 1)**

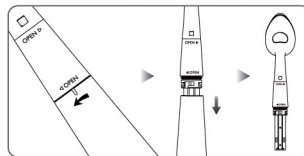
- ① Brush Head
- ② Power Button
- ③ Battery Cover
- ④ Brush Removal Button
- ⑤ Brush Handle
- ⑥ Eye Massager



Picture 1

**Using the Appliance:**

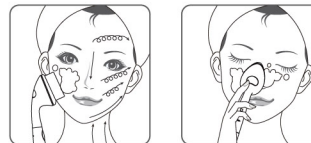
- ※ Remove the Battery Cover and insert one AAA battery. (Battery is not included) (as shown in picture 2)



Picture 2

**• Advanced Sonic Facial Cleansing**

1. Apply cleansing gel/lotion to your face (forehead, cheeks, nose and chin).
2. Turn on the appliance and the Sonic Vibration Facial Cleansing Function. Place the Brush Head on your face and gently move it in circular motion for 20 seconds in each zone (as shown in picture 3).

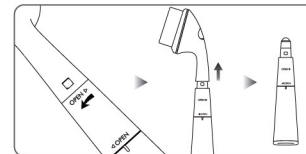


Picture 3

3. Rinse your face and apply moisturizing lotion.

**• Sonic Vibration Massage**

1. Remove the Brush Handle from the Connection Pin to use the Eye Massager as shown in picture 4 (it is recommended to turn off the massage function and use the eye massage head on the skin without vibration if you have sensitive skin).



Picture 4

2. Apply eye cream to the skin around the eye and massage the area with gentle movements. Gently massage from the inner corner of the eye to the temple. Slight press and massage the temple for relaxation (as shown in picture 5).



Picture 5

**Clean and Maintenance:**

1. Clean the Brush Head and the Main Unit after each use. Turn the appliance off before you start cleaning it.
2. Do not immerse the Main Unit in water.
3. Do not use alcohol, steel wool, abrasive cleaners or corrosive liquid to clean it. Doing so may result in malfunction or discoloration of the appliance.
4. Remove the batteries out of the device if you are not going to use it.

**Trouble Shooting:**

Problem	Possible Causes	Solution
The appliance does not work	The battery was installed incorrectly	Turn off the appliance and install the battery correctly as guided
	The battery is running low.	Replace the battery as guided
Abnormal Noise	The Brush Head is installed incorrectly	Please turn off the appliance, and install the Brush Head correctly